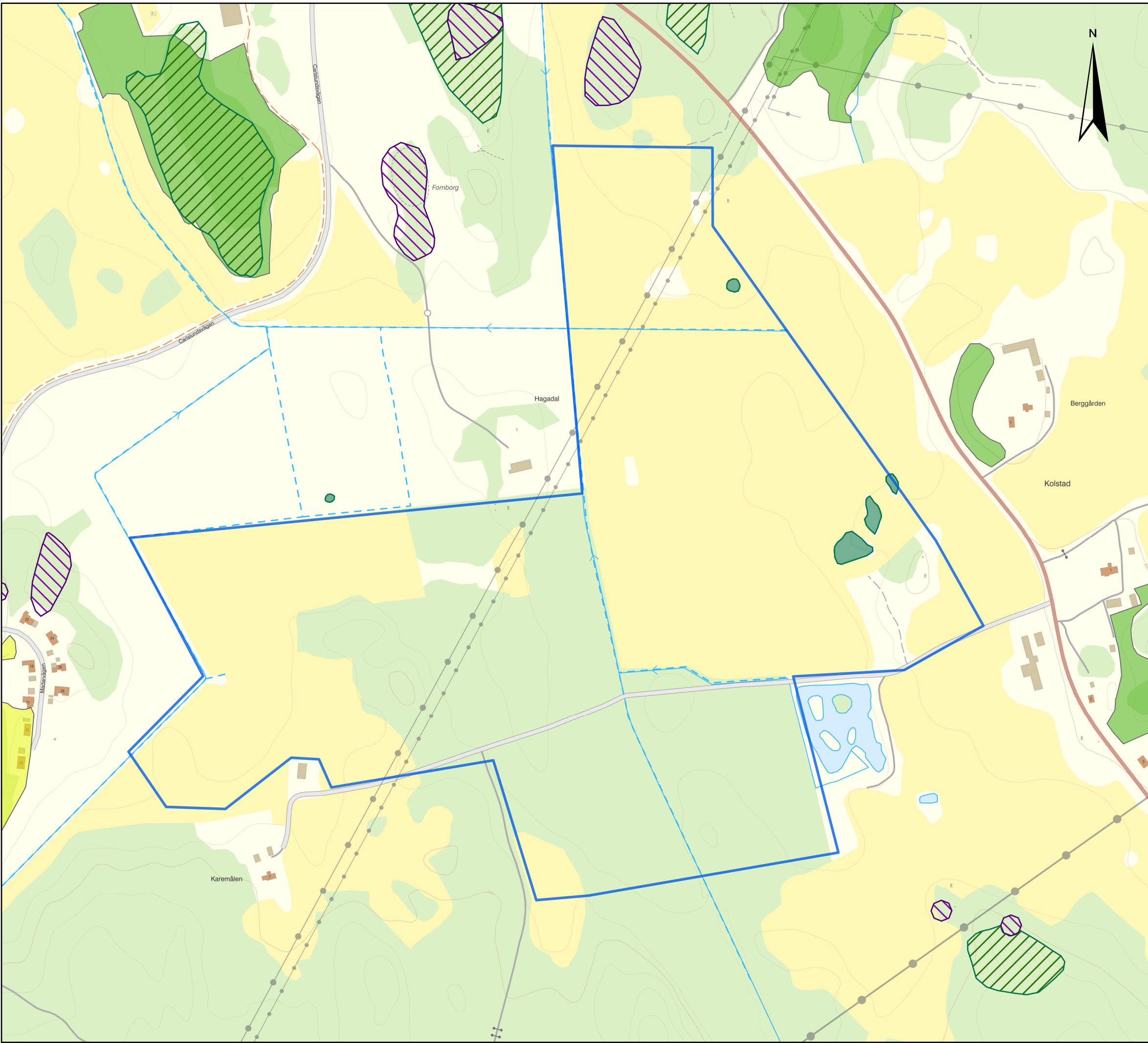







C:\Users\tobiasd\OneDrive - Stena\Projekt - aktiva\Kolstad, Mjölby (Sol)\1. Projektinifiering\4. GIS\3. ArcGIS ProjektData\Kolstad\_230208\_Kolstad\_samrådskartor.aprx | tobiasd | © SR Energy



Naturmiljö

Kolstad  
Mjölby kommun

Teckenförklaring

-  Projektområde
-  Naturvärden (Skogsstyrelsen)
-  Nyckelbiotoper (Skogsstyrelsen)
-  Åkerholme
-  Dike

Ängs- och betesmarksinventering

Markslag

-  Bete
-  Restaurerbar



0 100 200 meter

Koordinatsystem: SWEREF99 TM

Utskriftsformat: A3

Skala: 1:5 000



Dokumentdatum: 2023-02-17